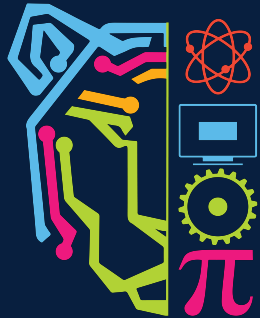


# El Paso High School Magnet Programs

Wednesday, November 7, 6 PM  
EPHS Auditorium



EL PASO INDEPENDENT  
SCHOOL DISTRICT



# Agenda

Welcome  
Dual Language Magnet  
AP Capstone Program  
STEM Academy  
Sample Schedules  
“EPHS 101”



EL PASO INDEPENDENT  
SCHOOL DISTRICT

# Welcome Pupil Transfer update

---

Mark A. Paz, Principal



# El Paso High School Dual Language Magnet

---

- Internationally recognized program
- Math & Science taught 50/50
- 50/50 **daily** exposure
- Program is **skill** specific, not career specific
- UMC qualified medical interpretation hours
- Can be **combined** with AP Capstone or STEM Academy



SO HIGH SCHOOL  
DUAL LANGUAGE  
MAGNET PROGRAM



# Dual Language Course Completion Expectations

---

- **Complete 12** or more Dual Language Classes over 4years
- **Earn 4 – 7** Foreign Language credits
- **Yearly course load:**
  - Foreign Language
  - Dual Language, T-STEM or AP Capstone electives
  - Rigor (PAP, AP, DC, DE)



# Dual Language Course Offerings



<u>100% English</u>	<u>75/25</u>	<u>50/50</u>	<u>75/25</u>	<u>100% Foreign Language</u>
<ul style="list-style-type: none"> <li>-PAP English</li> <li>-AP English</li> <li>-Upper Level Math/Sciences</li> <li>-SS Spec. Topics</li> <li>-American Cult. Studies</li> </ul>	<ul style="list-style-type: none"> <li>-Folklorico</li> <li>-Chicano Studies</li> </ul>	<ul style="list-style-type: none"> <li>-DL PAP Biology</li> <li>-DL PAP Chemistry</li> <li>-DL PAP Algebra</li> <li>-DL PAP Geometry</li> <li>-DL PAP Algebra 2</li> <li>- DL Principles of Engineering</li> <li>-DL World History</li> <li>-Spanish 6 Translation</li> </ul>	<ul style="list-style-type: none"> <li>-DL Pro Comm</li> <li>-DL Spanish Special Topics</li> </ul>	<ul style="list-style-type: none"> <li>-PAP Spanish 3</li> <li>-AP Spanish 4</li> <li>-PAP Spanish 5</li> <li>-AP Spanish 5</li> </ul>



# Recognition and Accolades



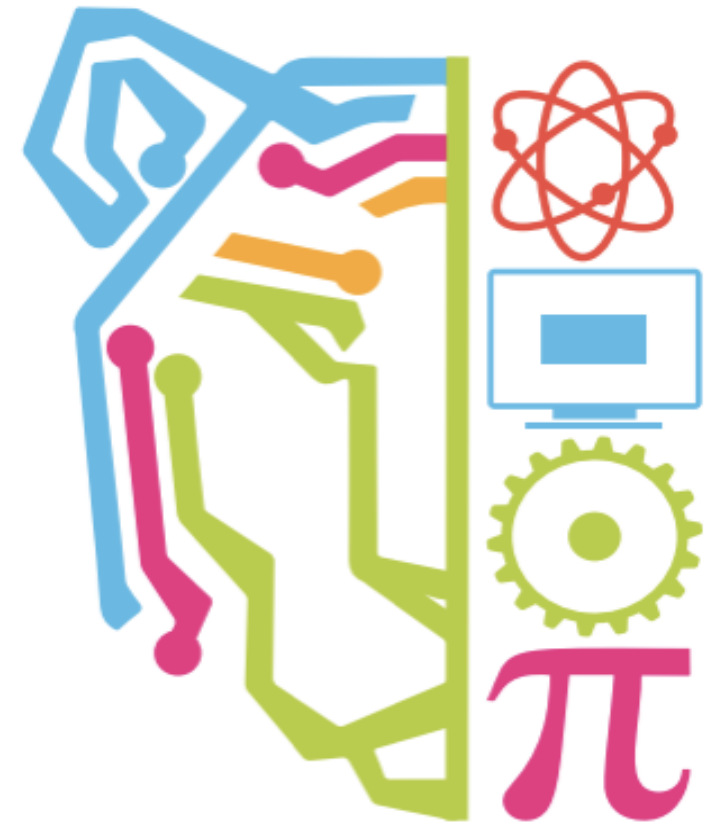
- Multiple T.E.A. Performance Acknowledgements
  - Bilingualism and Biliteracy
- El Paso High School Advanced Seal of Biliteracy
- Up to 30 Language College Credits



# El Paso High School STEM Academy

---

- State accredited program
- A smaller learning community (22:1)
- Real-world experience through collaborative professional partnerships and internships
- Can be **combined** with Dual Language Magnet or AP Capstone Program



EL PASO HIGH SCHOOL  
STEM



# T-STEM Course Completion Expectations

---

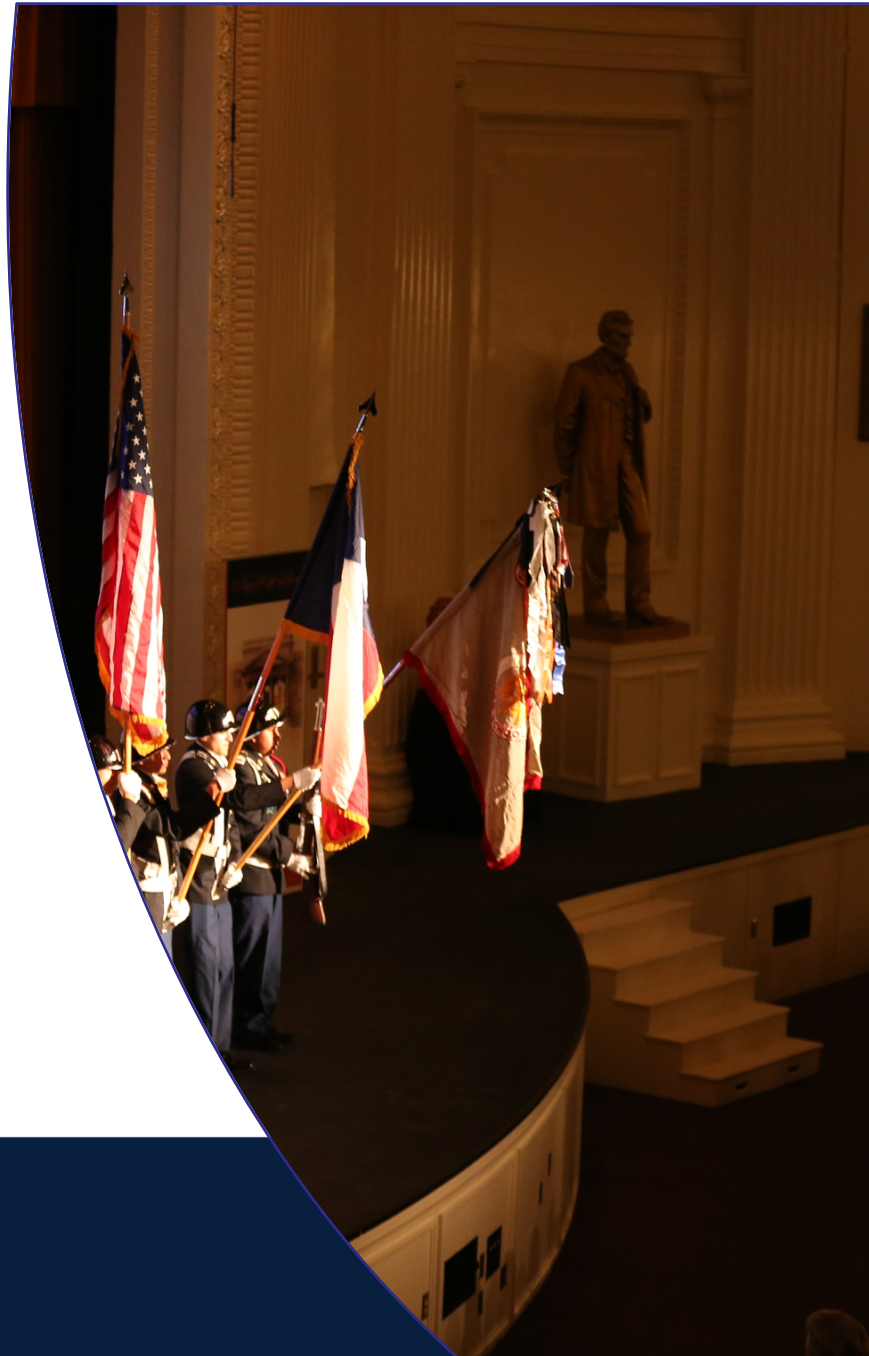
- 4 – 6 credits of Math
- 4 – 6 credits of Science
- Pre-AP, AP, Dual Credit or Dual Enrollment rigor
- Required courses will vary by pathway, and all include
  - Principles of Engineering
  - Biology, Chemistry and Physics
  - Algebra 2



# STEM Academy Pathways

---

- Innovative Technology Systems
  - Coding, Computer Science
- STEM Science
  - Biomedical, Robotics
- STEM Mathematics
  - Calculus, Physics



# STEM Academy Courses

---

- PAP, PAP DL Biology
- AP Biology
- PAP, PAP DL Chemistry
- Chemistry OnRamps
- Physics 1 OnRamps
- AP Physics C Mechanics
- AP Environmental Systems
- PAP Physiology & Anatomy
- DC Astronomy
- Earth & Space
- Robotics I & II
- Biotech
- Forensics
- Principles of Engineering
- Principles of Technology
- Computer Science OnRamps
- Pre-Calculus DC and OnRamps
- AP Calculus AB, BC
- AP Statistics
- Arts, Entertainment & Technology OnRamps



# STEM Recognitions and Accolades

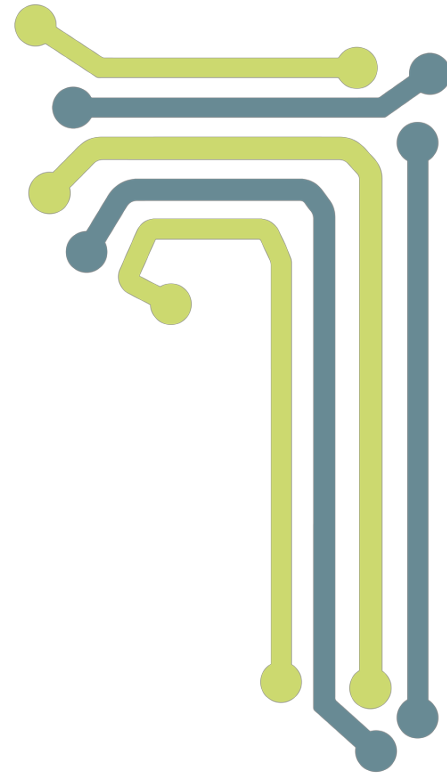
- Earn Multiple T.E.A. Endorsements
- UTEP MAES/SHPE
- Earn up to 24 College Credits
- Graduation recognition



# AP Capstone



- 2 - Year upper level program
- Offered **only** at EPHS
- UT Austin On-Ramps **Dual Enrollment** Program
- Can be **combined** with Dual Language Magnet or T-STEM Academy



EL PASO HIGH SCHOOL  
**Capstone**  
DIPLOMA PROGRAM



# AP Capstone Course Completion Expectations

---

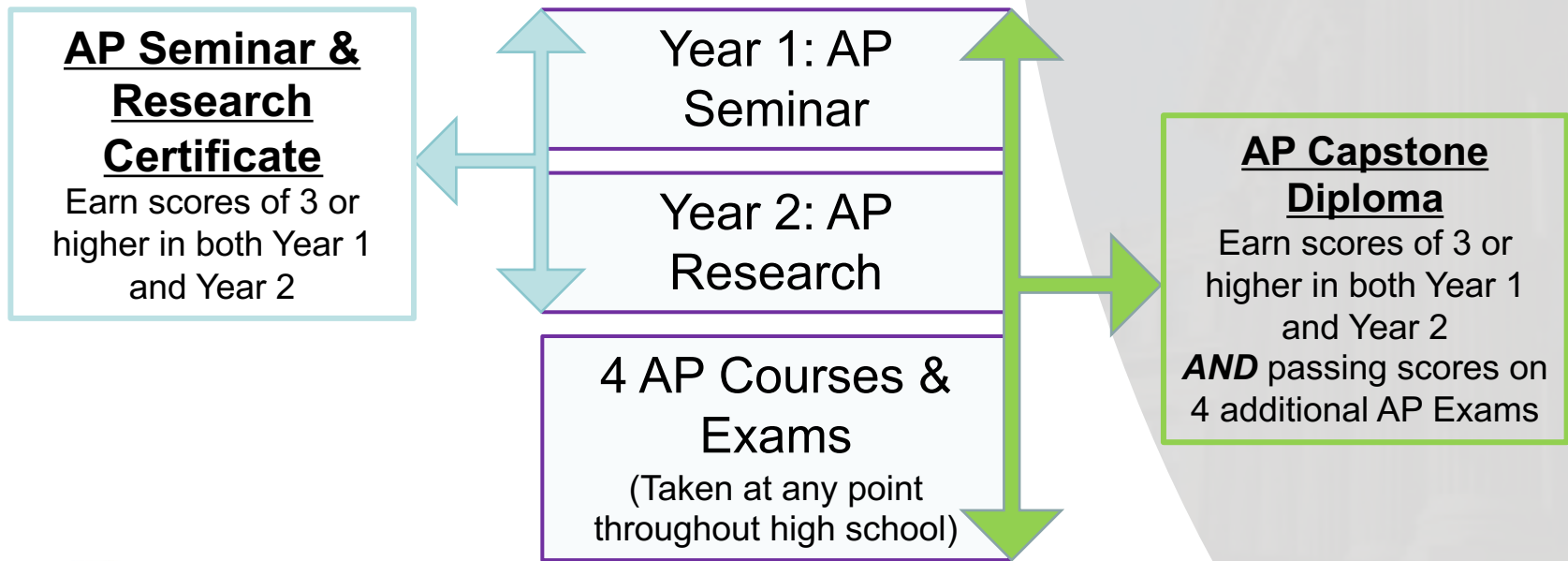
- AP Seminar, Junior Year
  - Term project and presentation
  - Individual research-based essay and presentation
  - End-of-Course exam
- AP Research, Senior Year
  - Academic paper
  - Presentation and Oral Defense
- Yearly course load of academic rigor:
  - Pre-AP, AP, Dual Credit, Dual Enrollment



# Program Model

## Recognitions & Accolades

---



# Sample Scheduling: Dual Language Magnet and AP Capstone

## Grade 9

Pre-AP English

Pre-AP **DL** Geometry

Pre-AP **DL** Biology

AP Human Geography

**Spanish (PAP 5)**

**DL** or DC Speech/Health

**DL** Principles of Engineering

Elective:

## Grade 10:

Pre-AP English 2

Pre-AP **DL** Algebra 2

Pre-AP **DL** Chemistry

AP or DC World History

**Spanish (AP 5)**

Robotics

Elective: (Fine Arts)

Elective:

## Grade 11:

AP English 3 or  
**OnRamps**

DC or **OnRamps**  
Pre Cal

AP or DC US History

AP Physics

**AP Seminar Year 1**

**Spanish 6 Translation**

Elective: (**SS Special Topics**,  
**Chicano Studies**)

Elective:

## Grade 12:

AP English 4

Cal AB

Cal BC (or Elective)

AP or DC Govt. and Econ.

4<sup>th</sup> Year Science

**AP Research Year 2**

Elective: **Spanish**  
**Special Topics**

Elective:



# Sample Scheduling: Dual Language Magnet and T-STEM

## Grade 9

Pre-AP English

Pre-AP **DL** Geometry

Pre-AP **DL** Biology

AP Human Geography

### **Spanish**

**DL** or DC Speech/Health

**DL** Principles of Engineering

Elective:

## Grade 10:

Pre-AP English 2

Pre-AP **DL** Algebra 2

Pre-AP **DL** Chemistry

AP or DC World History

### **Spanish**

Elective: **Robotics 1**

Elective: **Engineering, Computer Science or Science**

Elective:

## Grade 11:

AP English 3

Pre-AP or DC Pre Cal

AP or DC US History

AP Physics

### **Spanish**

Elective: **Robotics 2**

Elective: **Engineering, Computer Science**

Elective:

## Grade 12:

AP English 4

Cal AB

Cal BC (or Elective)

AP or DC Govt. and Econ.

4<sup>th</sup> Year Science

### **Practicum**

Elective: **Engineering, computer science or science class**

Elective:

# Sample Scheduling: T-STEM and AP Capstone

## Grade 9

Pre-AP English

Pre-AP Geometry

Pre-AP Biology

AP Human Geography

DC Speech/Health

Principles of  
Engineering

Elective:

## Grade 10:

Pre-AP English 2

Pre-AP **DL** Algebra 2

Pre-AP DL Chemistry

AP or DC World History

Elective (Technology or  
Fine Arts)

Elective: **Computer  
Science Engineering, or  
science class**

Elective:

## Grade 11:

AP English 3 or  
**OnRamps**

DC or **OnRamps**  
Pre Cal

AP or DC US History

AP Physics

**AP Seminar Year 1**

Elective (**DL** Span

Elective: **Computer  
Science Engineering,  
or science class**

Elective:

## Grade 12:

AP English 4

Cal AB

Cal BC (or Elective)

AP or DC Govt. and  
Econ.

4<sup>th</sup> Year Science

**AP Research Year 2**

Elective: **Engineering,  
AP Computer Science  
or science class**

Elective:

# Sample Scheduling: Dual Language, T-STEM, AP Capstone

## Grade 9

Pre-AP English

Pre-AP Geometry **DL**

Pre-AP Biology **DL**

AP Human Geography

DC Speech/Health

Principals of  
Engineering

Elective: **Spanish**

Elective:

## Grade 10:

Pre-AP English 2

Pre-AP **DL** Algebra 2

Pre-AP **DL** Chemistry

AP or DC World History

Elective (Technology or  
Fine Arts)

Elective: **Computer  
Science Engineering,  
Robotics or science**

Elective:

## Grade 11:

AP English 3 or  
**OnRamps**

DC or **OnRamps**  
Pre Cal

AP or DC US History

AP Physics

**AP Seminar Year 1**

Elective **DL Spanish  
Special Topics**

Elective: **Computer  
Science Engineering,  
Robotics, or science**

Elective:

## Grade 12:

AP English 4

Cal AB

Cal BC (or Elective)

AP or DC Govt. and  
Econ.

4<sup>th</sup> Year Science

**AP Research Year 2**

Elective: **Engineering,  
AP Computer Science  
or science class**

Elective:

## TEXAS Graduation Requirements Program of Study

### 4 years of:

Math

Science

Social Studies

English

### 2 years of:

Foreign Language

### State required Electives:

Fine Arts

Technology

Speech/Health

P.E.

# “El Paso High School 101”

### *School Hours:*

- 8:45 AM - 3:55 PM
- Block Scheduling
  - A Day Orange: Periods 1 - 4
  - B Day Black: Periods 5 - 8

### *4 Floors:*

- 1<sup>st</sup>: Electives, Counselors, Student Activities
- 2<sup>nd</sup>: Main Lobby
  - Main Offices
  - Auditorium
  - Mostly Math
- 3<sup>rd</sup>: English, Spanish, History
- 4<sup>th</sup>: Science, Technolgy



# Dates to remember and How to Apply

- November 1-30: Application Window
- December 3-7: Students Notified
- December 10-14: Students must accept to ONE Magnet Program
- EPISD Students [www.EPISD.org](http://www.EPISD.org) via Parent Portal
- Out-of-District, New to Public Schools: [www.ephsmagnetschools.weebly.com](http://www.ephsmagnetschools.weebly.com)
- Paper Applications available



# 2019-2020 Pre-Registration meeting

---

- Tuesday November 13, 5:00 PM
- Learn about graduation requirements
- Students and parents are invited to pre-register for next year's classes
- Meet and Greet your Counselors



# El Paso High School is *more* than just special programs....

- Built in 1916: **1<sup>st</sup>** school in El Paso; Nationally registered historic building
- Voted TOP 10 **MUST SEE** stadiums in the country
- Voted **THE MOST BEAUTIFUL** High School in Texas
- Named on U.S. News and World Report's list of "**BEST HIGH SCHOOLS**"
- AP Capstone Diploma program: **ONLY** offered at El Paso High School
- **UT AUSTIN** dual enrollment **COMBINES WITH ANY PROGRAM**
- EPHS Class of 2018 earned **\$12 MILLION** In scholarships
- Any two programs can be **COMBINED**



Follow us!

[www.ephspdualanguage.com](http://www.ephspdualanguage.com)



# For more information:

[www.episd.org](http://www.episd.org)

[www.episd.org/elpaso](http://www.episd.org/elpaso)

[www.ephsduallanguage.com](http://www.ephsduallanguage.com)

[www.ephsmagnetschools.weebly.com](http://www.ephsmagnetschools.weebly.com)

